

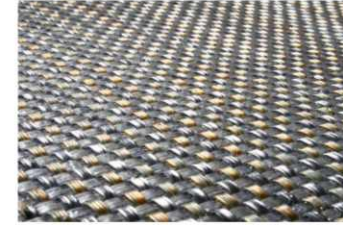
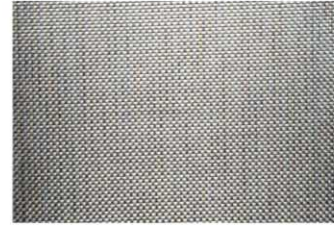
**Luxury woven vinyl floor** collection with its fine textile structure provides a luxurious and aesthetic flooring solution besides its practical features. This unique, woven design is completely watertight and it includes fiberglass reinforcement which further enhances its dimensional stability. Woven vinyl floors are an ideal choice for any aesthetic interior due to their extraordinary woven surface.

Characteristics	Standard	Tiles
Classification	EN 685	33
Fire rating	EN 13501-1	Bfl-s1
Dynamic coefficient of friction	EN 13893	DS
Colour fastness	ISO 105-B02	> 6
Slip resistance	EN13893	R11
Composition	-	87% PVC + 13% PES + backing 100% PVC with fiberglass reinforced
Chair with castors	EN 985	Continuous use
Weight	EN 430	4.2 kg/m <sup>2</sup>
Thickness	EN 428	3.4 mm
Tile dimension	EN 427	45.7 x 45.7 cm / 18"x18"
Impact sound	ISO 140-8	ΔLw=14dB
Dimension stability	EN 434	< 0.25 %
Resistance to stains	EN 423	No effect
Body voltage/Static load	ISO 1815	< 2 kV
Thermal resistance	EN 12667	< 0,15 m <sup>2</sup> K/W

**GB-01 BAMBOO GOLD**



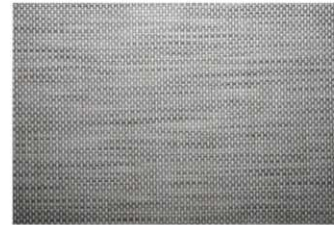
**GB-04 LATTICE SILVER**



**GB-02 LATTICE BRONZE**



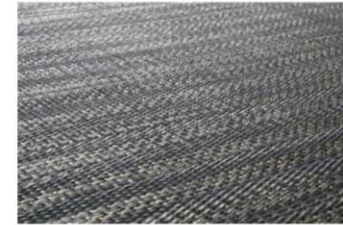
**GB-07 LATTICE GRAPHITE**



**GB-03 LATTICE BEIGE**



**GB-05 WAVE DARK IRON**



**GB-06 WAVE LIGHT IRON**



**MAGICFLOOR<sup>®</sup>**  
INTERNATIONAL  
*The best way to your floor*

**VINYL FLOORS**